



fixed price
\$930,200*

Images for illustrative purposes only & may depict upgrade options available at additional charges such as lighting, window furnishings, timber look garage door & timber windows. Pricing also excludes features not supplied by Carlisle, inc fencing, landscaping, letterbox, decking & driveway. Facade details inc entry door, window sizes & placements may vary between house types & sizes. Refer to working drawings for specific locations and sizes.

better **THAN EVER** Luxury Inclusions

Build your dream family home!

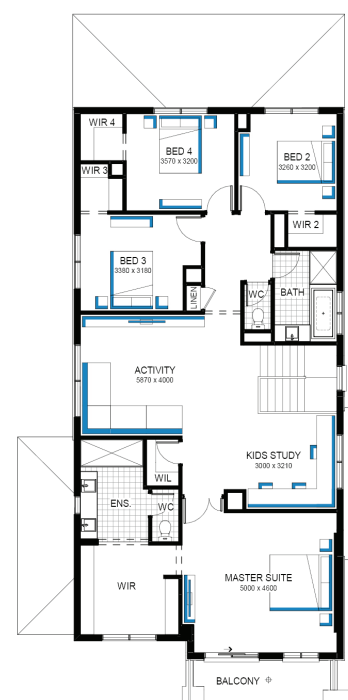
Includes a huge list of standard inclusions

- ✓ Fixed price site costs and connections
- ✓ Developer and council requirements
- ✓ Up to 10K off Facades**
- ✓ 20mm Caesarstone to kitchen benchtop
- ✓ Westinghouse kitchen appliances
- ✓ Clear glass splashback or tiles to kitchen
- ✓ Butlers pantry fit out
- ✓ Opulent bathroom fit out
- ✓ 20mm Caesarstone to bathroom and ensuite(s) benchtops
- ✓ Laundry fit-out
- ✓ Double glazing to windows
- ✓ Refrigerated cooling & Heating
- ✓ Flooring throughout
- ✓ LED lighting
- ✓ Upgraded H-Class slab
- ✓ 7-star energy rating

Granada Grand 40 MK2, Bentley 2 Façade



Lot 2030 (400m²) Seventh Bend, WEIR VIEWS
 Lot Orientation: NORTH



FOR ENQUIRIES CONTACT:

Customer Enquiry Team 13 27 67 | w: carlislehomes.com.au

Exford Road WEIR VIEWS 3338

Inspire
 CONTEMPORARY LIVING

**SEVENTH
 BEND**

*Fixed Price current as of 15/07/2025. *Pricing based on developer engineering plans & plan of subdivision. Hebel homes may be smaller than dimensions shown on the floorplan due to the external wall thickness, see working drawings for Hebel home dimensions. Confirm land prices and availability prior to purchase. Community Infrastructure Levy & Asset Protection not included in pricing and must be arranged directly by client with developer (where applicable). Subject to developer & council approval. Package Price does not include any costs associated with Developer's Corner Facade treatment requirements (which will be priced by Carlisle Homes by way of Post Contract Variation), stamp duty, government, legal or bank charges. Alterations may incur additional charges. Carlisle reserves the right to withdraw or amend pricing, inclusions and promo without notice. Bushfire (BAL) requirements will be credited back to the client if Carlisle Homes receives confirmation that the house is not being constructed in a BAL designated area. This cannot be confirmed until site survey and property information from relevant authorities is received. **Better than Ever Promotion applies to new quotes and initial deposits on Carlisle's Inspire homes from 14 July 2025 and is not available in conjunction with any other offers. Up to \$10K off Façade based on Bromley Hebel and Baxter Hebel facades offered at no charge with a \$10K credit, which will appear as a line item in the HIA Building Contract. *\$5K Hebel discount has been taken off the full retail price. Carlisle reserves the right to withdraw or change pricing.