

**easy**  
LIVING

**EXCLUSIVE**

fixed price

**\$803,800\***

Images for illustrative purposes only & may depict upgrade options available at additional charges such as lighting, window furnishings, timber look garage door & timber windows. Pricing also excludes features not supplied by Carlisle, inc fencing, landscaping, letterbox, decking & driveway. Façade details inc entry door, window sizes & placements may vary between house types & sizes. Refer to working drawings for specific locations and sizes.

**THE  
better  
DEAL**

**better  
inclusions**

Perfect for first home buyers and investors!

6 easy steps to your brand new home

Plus a huge list of standard and promotional inclusions##

Fixed price site costs & connections

Developer & council requirements

\$2,000 deposit until slab\*

A range of NO CHARGE Hebel Facades

Up to 5K off Hebel Facades\*

Caesarstone benchtops to kitchen

Premium kitchen appliances

2590mm High ceilings

Upgraded H-Class slab

Bathroom fit-out

20mm Caesarstone to ensuite

Stylish & durable flooring

Laundry fitout

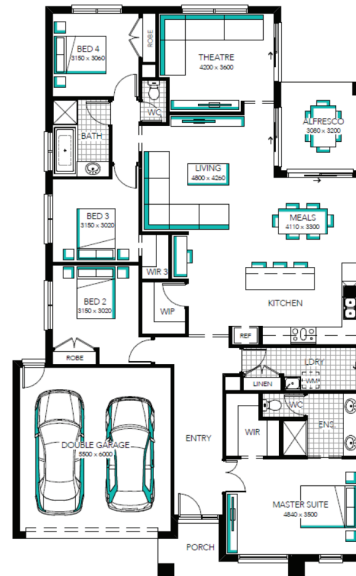
Feature staircase

Block out blinds

## Beaumont 25 MK2, Nero - Hebel Façade



**Lot 2722 (392m<sup>2</sup>) Orana, CLYDE NORTH**  
Land Orientation: SOUTH



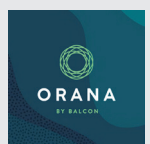
**CARLISLE  
HOMES**

### FOR ENQUIRIES CONTACT:

Customer Enquiry Team 13 27 67 | w: [easylivingbycarlisle.com.au](http://easylivingbycarlisle.com.au)

Open Saturday-Wednesday from 11am - 5pm

2 - 8 Baroda Avenue Clyde North 3978



\*Fixed Price current as of 06/07/2026. \*Pricing based on developer engineering plans & plan of subdivision. Hebel homes may be smaller than dimensions shown on the floorplan due the external wall thickness, see working drawings for Hebel home dimensions. Confirm land prices & availability prior to purchase. Community Infrastructure Levy & Asset Protection not included in pricing and must be arranged directly by client with developer (where applicable). Subject to developer & council approval. Package Price does not include any costs associated with Developer's Corner Façade treatment requirements (which will be priced by Carlisle Homes by way of Post Contract Variation), stamp duty, government, legal or bank charges. Refer to working drawings for specific locations & sizes. Alterations may incur additional charges. Carlisle reserves the right to withdraw or amend pricing, inclusions and promo without notice. \*The Better Deal applies to new quotes and initial deposits on Carlisle Easy Living homes from 6th July 2026 and cannot be combined with any other promotion, offer or discount unless expressly stated by Carlisle Homes, and excludes any amended or reissued prior quotes. Speak to a Sales Consultant for further details or visit [carlislehomes.com.au/disclaimer](http://carlislehomes.com.au/disclaimer). Registered Building Practitioner CDB-U 50143.