

**easy**  
LIVING

**\$35K**  
Land  
Rebate  
Available

\*T&C apply. Speak to your sales consultant for further details.



fixed price  
**\$802,500\***

Images for illustrative purposes only & may depict upgrade options available at additional charges such as lighting, window furnishings, timber look garage floor & timber windows. Pricing also excludes features not supplied by Carlisle, inc. fencing, landscaping, letterbox, decking & driveway. Façade details inc. entry door, window sizes & placements may vary between house types & sizes. Refer to working drawings for specific locations and sizes.

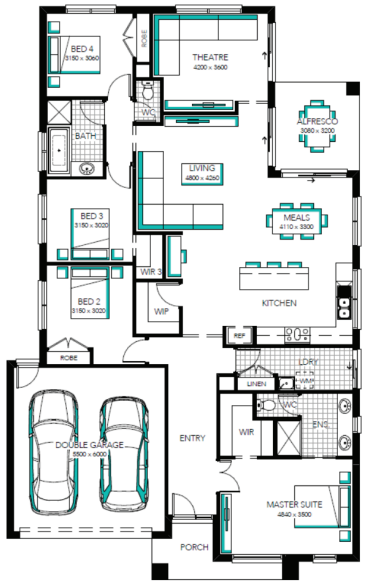
**THE BETTER DEAL** better inclusions

**Beaumont 25 MK2, Nero - Hebel Façade**



**Lot 609 (448m<sup>2</sup>) Wattle Park, TARNEIT**  
Land Orientation: SOUTH

- Perfect for first home buyers and investors!
- 6 easy steps to your brand new home
- Plus a huge list of standard and promotional inclusions##
- Fixed price site costs & connections
- Developer & council requirements
- \$2,000 deposit until slab\*
- A range of NO CHARGE Hebel Facades
- Up to 5K off Hebel Facades\*
- Caesarstone benchtops to kitchen
- Premium kitchen appliances
- 2590mm High ceilings
- Upgraded H-Class slab
- Bathroom fit-out
- 20mm Caesarstone to ensuite
- Stylish & durable flooring
- Laundry fitout
- Feature staircase
- Block out blinds



**FOR ENQUIRIES CONTACT:**  
Customer Enquiry Team 13 27 67 | w: [easylivingbycarlisle.com.au](http://easylivingbycarlisle.com.au)

Wattle Park

\*Fixed Price current as of 06/07/2026. \*Pricing based on developer engineering plans & plan of subdivision. Hebel homes may be smaller than dimensions shown on the floorplan due the external wall thickness, see working drawings for Hebel home dimensions. Confirm land prices & availability prior to purchase. Community Infrastructure Levy & Asset Protection not included in pricing and must be priced directly by client with developer (where applicable). Subject to developer & council approval. Package Price does not include any costs associated with Developer's Corner Façade treatment requirements (which will be priced by Carlisle Homes by way of Post Contract Variation), stamp duty, government, legal or bank charges. Refer to working drawings for specific locations & sizes. Alterations may incur additional charges. Carlisle reserves the right to withdraw or amend pricing, inclusions and promo without notice. \*The Better Deal applies to new quotes and initial deposits on Carlisle Easy Living homes from 6th July 2026 and cannot be combined with any other promotion, offer or discount unless expressly stated by Carlisle Homes, and excludes any amended or reissued prior quotes. Speak to a Sales Consultant for further details or visit [carlislehomes.com.au/disclaimer](http://carlislehomes.com.au/disclaimer). Registered Building Practitioner CDB-U 50143.

-Incentive is a rebate of up to \$35,000 (GST incl) off the payable purchase price at time of settlement. Promotion applies to select vacant land lots, house and land packages, and townhomes at select VIC Stockland communities. Not a price reduction. Promotion finishes on 14 June 2026 at 5pm (AEST). Visit <https://www.stockland.com.au/residential/vic/sale-terms> for full terms and conditions.&#8203;