

easy
LIVING

fixed price
\$725,900*

Images for illustrative purposes only & may depict upgrade options available at additional charges such as lighting, window furnishings, timber look garage door & timber windows. Pricing also excludes features not supplied by Carlisle, inc. fencing, landscaping, letterbox, decking & driveway. Façade details inc. entry door, window sizes & placements may vary between house types & sizes. Refer to working drawings for specific locations and sizes.

Fast, Easy,
More **Affordable**
**T&C's apply

Perfect for first home buyers and investors!

6 easy steps to your brand new home

Plus a huge list of standard and promotional inclusions##

✓ Fixed price site costs & connections

✓ Developer & council requirements

✓ Flooring throughout

✓ High ceilings

✓ Upgraded H-Class slab

✓ 20mm Caesarstone benchtops to kitchen

✓ Premium kitchen appliances

✓ Feature overhead kitchen cupboards

✓ Bathroom fit-out

✓ Laundry fit-out

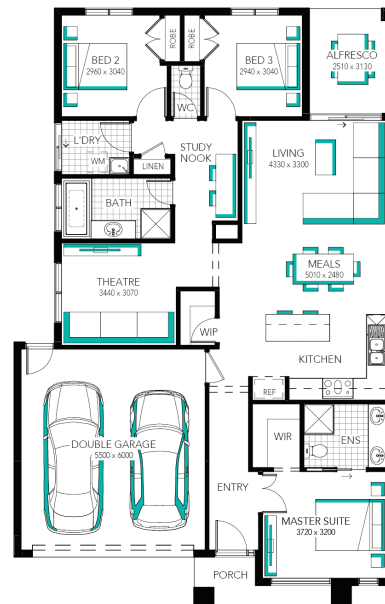
✓ Feature staircase balustrade

✓ Solar PV system & LED lighting

✓ 7 star rating with Double glazing throughout

**Ashbourne 19 (25.3), Nero -
Hebel Façade**

Lot T639 (350m²) Woodlea, AINTREE
Land Orientation: SOUTH



**CARLISLE
HOMES**

FOR ENQUIRIES CONTACT:

Customer Enquiry Team 13 27 67 | w: easylivingbycarlisle.com.au

Open 7 days a week 11am - 5pm

4 - 16 Hazelwood Drive AINTREE 3336



WOODLEA

*Fixed Price current as of 21/03/2025. Pricing based on developer engineering plans & plan of subdivision. Hebel homes may be smaller than dimensions shown on the floorplan due to the external wall thickness; see working drawings for Hebel home dimensions. Confirm land prices and availability prior to purchase. Subject to developer and council approval. Price does not include any stamp duty, government, legal or bank charges. Alterations may incur additional charges. Carlisle reserves the right to withdraw or amend pricing, inclusions and promo without notice. Bushfire (BAL) requirements will be credited back to the client if Carlisle Homes receives confirmation that the house is not being constructed in a BAL designated area. This cannot be confirmed until site survey and property information from relevant authorities is received. ##Promotional offer applies to new quotes and initial deposits on Carlisle's EasyLiving homes from 6th January 2025, and is not available in conjunction with any other offers. Carlisle reserves the right to withdraw or change pricing, inclusions or promotion without notice. '6 month price lock' offer can be extended for a further 12 months to a max 18 month site start. Extension will be charged at \$1,300 per month for singles and \$1,600 per month for doubles. For further details on our '6 month price lock', or promotional inclusions, speak to a Sales Consultant or visit carlislehomes.com.au/disclaimer. Registered Building Practitioner CDB-U 50143