



CARLISLE
HOMES

fixed price
\$802,300*

Images for illustrative purposes only & may depict upgrade options available at additional charges such as lighting, window furnishings, timber look garage door & timber windows. Pricing also excludes features not supplied by Carlisle, inc fencing, landscaping, letterbox, decking & driveway. Facade details inc entry door, window sizes & placements may vary between house types & sizes. Refer to working drawings for specific locations and sizes.

Life's better

**Limited
Edition.**

Dream bigger on a smaller lot

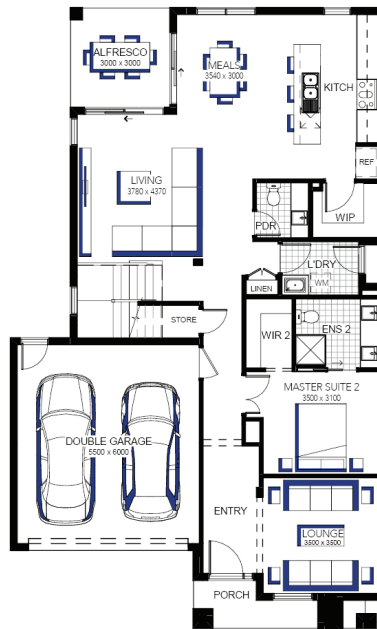
Build your dream family home!

Includes a huge list of standard inclusions

- ✓ Fixed price site costs and connections
- ✓ Developer and council requirements
- ✓ Flooring throughout
- ✓ 20mm Caesarstone to kitchen benchtop
- ✓ Westinghouse stainless steel upright cooker OR
- ✓ Westinghouse gas cooktop with under bench oven
- ✓ Westinghouse canopy rangehood
- ✓ Fisher and Paykel Dishwasher
- ✓ Bathroom fit out
- ✓ Laundry fit out
- ✓ LED lighting
- ✓ Aluminium entertainer sliding door to alfresco
- ✓ Upgraded H-Class slab
- ✓ 7-star energy rating
- ✓ Plus much more!

Hamilton Lounge 33 DM (25.3) , Lindeman- Hebel Façade

Lot 931 (350m²) Lyra, BEVERIDGE
Lot Orientation: SOUTH



FOR ENQUIRIES CONTACT:

Customer Enquiry Team 13 27 67 | w: carlislehomes.com.au

75 Stewart Street BEVERIDGE 3753

Inspire
CONTEMPORARY LIVING



*Fixed Price current as of 13/02/2026. *Pricing based on developer engineering plans & plan of subdivision. Hebel homes may be smaller than dimensions shown on the floorplan due to the external wall thickness, see working drawings for Hebel home dimensions. Confirm land prices and availability prior to purchase. Community Infrastructure Levy & Asset Protection not included in pricing and must be arranged directly by client with developer (where applicable). Subject to developer & council approval. Package Price does not include any costs associated with Developer's Corner Facade treatment requirements (which will be priced by Carlisle Homes by way of Post Contract Variation), stamp duty, government, legal or bank charges. Alterations may incur additional charges. Carlisle reserves the right to withdraw or amend pricing, inclusions and promo without notice. Bushfire (BAL) requirements will be credited back to the client if Carlisle Homes receives confirmation that the house is not being constructed in a BAL designated area. This cannot be confirmed until site survey and property information from relevant authorities is received. Pricing (the base house price, 365 Inclusions, promotion inclusions, quoted variations and upgrades) is subject to land being titled and will be held by Carlisle Homes subject to a site start occurring no later than 18th Dec 2026. Limited Price Lock. Limited edition in greenfield locations: Pricing (the base house price, 365 Inclusions, promotion inclusions, quoted variations and upgrades) will be held by Carlisle Homes subject to a site start occurring no later than 30th June 2026. For a site start that occurs between 1st July 2026 and 18th Dec 2026, the base house price will increase by \$10,000. If site start does not occur by 18th Dec 2026, Carlisle Homes reserves the right to revise all pricing contained in the quotation/contract or withdraw the offer to build.