



fixed price

\$1,104,700*

Images for illustrative purposes only & may depict upgrade options available at additional charges such as lighting, window furnishings, timber look garage door & timber windows. Pricing also excludes features not supplied by Carlisle, inc fencing, landscaping, letterbox, decking & driveway. Façade details inc entry door, window sizes & placements may vary between house types & sizes. Refer to working drawings for specific locations and sizes.

Live Like A Star Inclusions**

Build a home of unparalleled luxury!

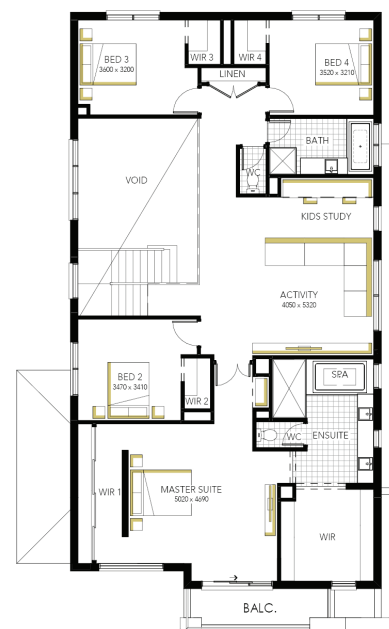
Includes a huge list of standard inclusions

Plus 'Live Like a Star' with our luxury promotional inclusions**

- ✓ Fixed price site costs and connections
- ✓ Developer and council requirements
- ✓ Premium flooring throughout
- ✓ High ceilings and square set cornice to ground floor
- ✓ 40mm Caesarstone to kitchen
- ✓ Fisher & Paykel kitchen appliances
- ✓ Butler's pantry and laundry fit-out
- ✓ 20mm Caesarstone to bathroom, ensuite(s) and laundry benchtops
- ✓ Doubling glazing throughout
- ✓ Heating & cooling
- ✓ Feature timber staircase
- ✓ LED lighting
- ✓ Upgraded H-Class slab
- ✓ 7 star energy rating
- ✓ Fixed price site costs and connections

Rothbury Grand Atrium 46 , Hardwick Façade

Lot 723 (448m²) Merrifield, MICKLEHAM
Lot Orientation: EAST



FOR ENQUIRIES CONTACT:

Customer Enquiry Team 13 27 67 | w: carlislehomes.com.au

Donnybrook Road MICKLEHAM 3064

AFFINITY
LUXURY LIVING

merrifield

*Fixed Price current as of 16/04/2025. Pricing based on developer engineering plans & plan of subdivision. Hebel homes may be smaller than dimensions shown on the floorplan due to the external wall thickness, see working drawings for Hebel home dimensions. Confirm land prices & availability prior to purchase. Community Infrastructure Levy & Asset Protection not included in pricing and must be arranged directly by client with developer (where applicable). Subject to developer & council approval. Package Price does not include any costs associated with Developer's Corner Façade treatment requirements (which will be priced by Carlisle Homes by way of Post Contract Variation), stamp duty, government, legal or bank charges. Alterations may incur additional charges. Carlisle reserves the right to withdraw or amend pricing, inclusions and promo without notice. Bushfire (BAL) requirements will be credited back to the client if Carlisle Homes receives confirmation that the house is not being constructed in a BAL designated area. This cannot be confirmed until site survey & property information from relevant authorities is received. **Live Like A Star Promotion applies to new quotes and initial deposits on Carlisle's Affinity homes from 1 May 2024, and is not available in conjunction with any other offers. 'Price lock offer' Pricing will be held subject to site start occurring no later than 18 months from initial payment. LED downlights will be located in electrical appointment. Carlisle reserves the right to withdraw or change pricing, inclusions or promotion without notice. For further details on price lock or promotional inclusions, speak to a Sales Consultant or visit carlislehomes.com.au/disclaimer. Registered Building Practitioner CDB-U 50143