

easy
LIVING



fixed price
\$834,500*

Images for illustrative purposes only & may depict upgrade options available at additional charges such as lighting, window furnishings, timber look garage door & timber windows. Pricing also excludes features not supplied by Carlisle, inc fencing, landscaping, letterbox, decking & driveway. Façade details inc entry door, window sizes & placements may vary between house types & sizes. Refer to working drawings for specific locations and sizes.

Chadwick Grand 24 (21.2), Grandview - Hebel Façade



Lot 652 (294m²) Society 1056, FRASER RISE
Land Orientation: NORTH

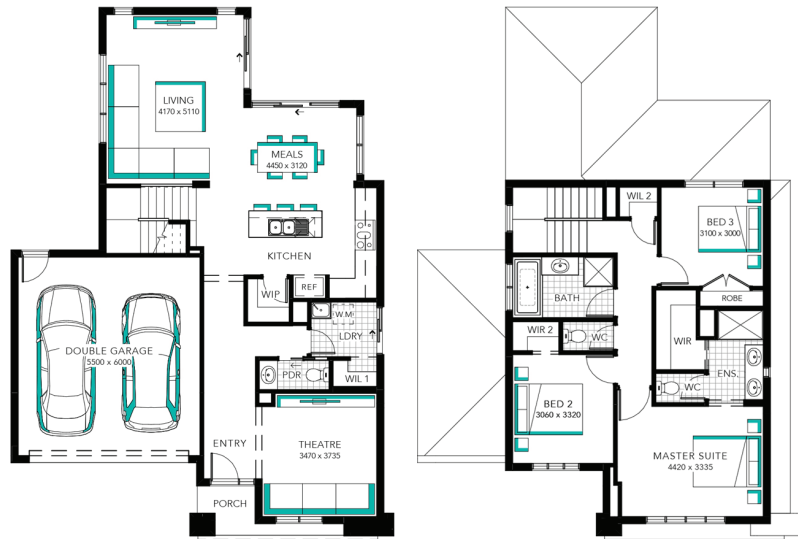
home starts here.
inclusions

Perfect for first home buyers and investors!

6 easy steps to your brand new home

Plus a huge list of standard and promotional inclusions##

- ✓ 2K Deposit* No more to pay until slab (**When finance arranged with Mortgage Domain)
- ✓ Prices locked to June 2027
- ✓ Fixed price site costs & connections
- ✓ Developer & council requirements
- ✓ Flooring throughout
- ✓ 2590mm High ceilings
- ✓ Upgraded H-Class slab
- ✓ 20mm edge Caesarstone kitchen benchtops
- ✓ Premium kitchen appliances
- ✓ Feature overhead kitchen cupboards
- ✓ Bathroom fit-out
- ✓ Laundry fit-out
- ✓ Feature staircase balustrade (house specific)
- ✓ 3.5kW Solar system & LED lighting



FOR ENQUIRIES CONTACT:

Customer Enquiry Team 13 27 67 | w: easylivingbycarlisle.com.au

1056 Taylors Road FRASER RISE 3336

Society1056



*Fixed Price current as of 14/05/2026. Pricing based on developer engineering plans & plan of subdivision. Confirm land prices and availability prior to purchase. Subject to developer and council approval. Price does not include any stamp duty, government, legal or bank charges. Alterations may incur additional charges. Images for illustrative purposes only & may depict upgrade options available at additional charges such as lighting, window furnishings, timber look garage door & timber windows. Pricing also excludes features not supplied by Carlisle, inc fencing, landscaping, letterbox, decking & driveway. Façade details inc entry door, window sizes & placements may vary between house types & sizes. The Carlisle Way Home Starts Here promotion applies to new quotes and initial deposits on Carlisle's EasyLiving homes from 5th January 2026, and is not available in conjunction with any other offers. *Only \$2K to Pay Until Slab offer applies to new quotes and initial deposits where finance is arranged by Mortgage Domayne and only available for Carlisle's EasyLiving range of homes from 21 November 2025. #Prices locked until June 2027 is subject to a site start occurring before June 30, 2027 and cannot be extended. Carlisle Homes reserves the right to revise all pricing. Registered Building Practitioner CDB-U 50143.