



CARLISLE HOMES

SAVE UP TO \$45K\*



fixed price

\$1,098,800\*

Images for illustrative purposes only & may depict upgrade options available at additional charges such as lighting, window furnishings, timber look garage door & timber windows. Pricing also excludes features not supplied by Carlisle, inc fencing, landscaping, letterbox, decking & driveway. Façade details inc entry door, window sizes & placements may vary between house types & sizes. Refer to working drawings for specific locations and sizes.

# better THAN EVER Luxury Inclusions

Build a home of unparalleled luxury!

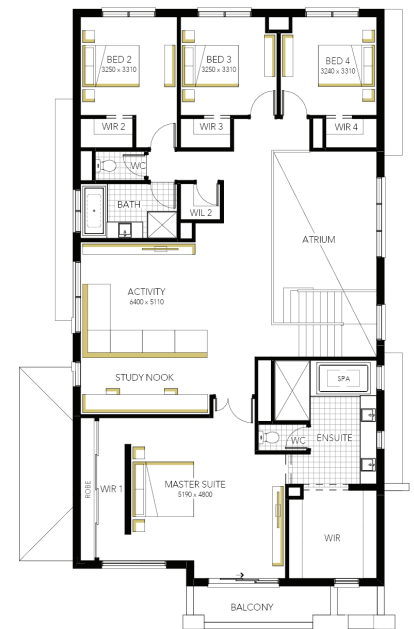
Includes a huge list of standard inclusions

- ✓ Fixed price site costs and connections
- ✓ Developer and council requirements
- ✓ Up to 5K off Hebel Facades\*
- ✓ Premium flooring throughout
- ✓ High ceilings and square set cornice to ground floor
- ✓ 40mm Caesarstone to kitchen
- ✓ Fisher & Paykel kitchen appliances
- ✓ Butler's pantry and laundry fit out
- ✓ 20mm Caesarstone to bathroom, ensuite(s) and laundry benchtops
- ✓ Full height tiling to master ensuite
- ✓ Doubling glazing throughout
- ✓ Refrigerated cooling & Heating
- ✓ LED lighting & Feature timber staircase
- ✓ Upgraded H-Class slab
- ✓ 7-star energy rating

## Canterbury Grand Atrium 47 (28.3), Hardwick Façade



Lot 2501 (448m<sup>2</sup>) Riverfield Rise, CLYDE NORTH  
Lot Orientation: WEST



### FOR ENQUIRIES CONTACT:

Customer Enquiry Team 13 27 67 | w: carlislehomes.com.au  
Open Saturday-Wednesday from 11am - 5pm  
3-5 Cyan Ave Clyde North 3978

AFFINITY  
LUXURY LIVING



\*Fixed Price current as of 31/10/2025. \*Pricing based on developer engineering plans & plan of subdivision. Hebel homes may be smaller than dimensions shown on the floorplan due the external wall thickness, see working drawings for Hebel home dimensions. Confirm land prices & availability prior to purchase. Community Infrastructure Levy & Asset Protection not included in pricing and must be arranged directly by client with developer (where applicable). Subject to developer & council approval. Package Price does not include any costs associated with Developer's Corner Façade treatment requirements (which will be priced by Carlisle Homes by way of Post Contract Variation), stamp duty, government, legal or bank charges. Refer to working drawings for specific locations & sizes. Alterations may incur additional charges. Carlisle reserves the right to withdraw or amend pricing, inclusions and promo without notice. Bushfire (BAL) requirements will be credited back to the client if Carlisle Homes receives confirmation that the house is not being constructed in a BAL designated area. This cannot be confirmed until site survey & property information from relevant authorities is received. \*\* Better than Ever Promotion applies to new quotes and initial deposits on Carlisle's Affinity homes from 14 July 2025, and is not available in conjunction with any other offers. \*Up to \$25K off Façade based on Manhattan Hebel facade offered at No Charge for Knockdown Rebuild homes. Bromley Hebel and Fenton Hebel facades are offered at no charge with a \$10K credit which will appear as a line item in the HIA Building Contract. \*5K Hebel discount has been taken off the full retail price. Carlisle reserves the right to withdraw or change pricing, inclusions or promotion without notice. For further details #545,000 discount has been deducted from price displayed on package flyer. No further discount available. Offer available on select lots at Meridian & Riverfield Estate only with Inspire & Affinity Double Story Range. Build site start must occur on or before 30/6/26. If site start is not achieved by 30/6/26, this discount will be reverted. Land discount subject to Developers T&Cs, and must settle by 06/02/2026. See your Sales Consultant for more