



fixed price

\$1,171,800*

Images for illustrative purposes only & may depict upgrade options available at additional charges such as lighting, window furnishings, timber look garage door & timber windows. Pricing also excludes features not supplied by Carlisle, inc fencing, landscaping, letterbox, decking & driveway. Facade details inc entry door, window sizes & placements may vary between house types & sizes. Refer to working drawings for specific locations and sizes.

better **THAN EVER** Luxury Inclusions

Build a home of unparalleled luxury!

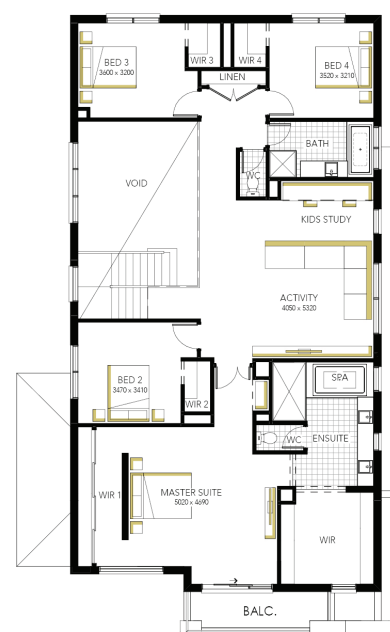
Includes a huge list of standard inclusions

- ✓ Fixed price site costs and connections
- ✓ Developer and council requirements
- ✓ Up to 5K off Hebel Facades*
- ✓ Premium flooring throughout
- ✓ High ceilings and square set cornice to ground floor
- ✓ 40mm Caesarstone to kitchen
- ✓ Fisher & Paykel kitchen appliances
- ✓ Butler's pantry and laundry fit out
- ✓ 20mm Caesarstone to bathroom, ensuite(s) and laundry benchtops
- ✓ Full height tiling to master ensuite
- ✓ Doubling glazing throughout
- ✓ Refrigerated cooling & Heating
- ✓ LED lighting & Feature timber staircase
- ✓ Upgraded H-Class slab
- ✓ 7-star energy rating

Rothbury Grand Atrium 46 , Primavera Hebel Façade



Lot 1118 (392m²) Officer Central, OFFICER
Lot Orientation: SOUTH



FOR ENQUIRIES CONTACT:

Customer Enquiry Team 13 27 67 | w: carlislehomes.com.au

Crn Bayview Rd & Princes Hwy OFFICER 3809

AFFINITY
LUXURY LIVING



*Fixed Price current as of 18/09/2025. *Pricing based on developer engineering plans & plan of subdivision. Hebel homes may be smaller than dimensions shown on the floorplan due to the external wall thickness, see working drawings for Hebel home dimensions. Confirm land prices & availability prior to purchase. Community Infrastructure Levy & Asset Protection not included in pricing and must be arranged directly by client with developer (where applicable). Subject to developer & council approval. Package Price does not include any costs associated with Developer's Corner Facade treatment requirements (which will be priced by Carlisle Homes by way of Post Contract Variation), stamp duty, government, legal or bank charges. Refer to working drawings for specific locations & sizes. Alterations may incur additional charges. Carlisle reserves the right to withdraw or amend pricing, inclusions and promo without notice. Bushfire (BAL) requirements will be credited back to the client if Carlisle Homes receives confirmation that the house is not being constructed in a BAL designated area. This cannot be confirmed until site survey & property information from relevant authorities is received. ** Better than Ever Promotion applies to new quotes and initial deposits on Carlisle's Affinity homes from 14 July 2025, and is not available in conjunction with any other offers. *Up to \$25K off Facade based on Manhattan Hebel facade offered at No Charge for Knockdown Rebuild homes. Bromley Hebel and Fenton Hebel facades are offered at no charge with a \$10K credit which will appear as a line item in the HIA Building Contract. *5K Hebel discount has been taken off the full retail price. Carlisle reserves the right to withdraw or change pricing, inclusions or promotion without notice. For further details #20K Inspire & Affinity discount applies to titled land only. Site start must occur before 28th Feb 2026. Discount deducted at time of deposit with Carlisle Homes. A further 20K land discount available and subject to Developers T&Cs, strictly deducted at time of land deposit. See your Sales Consultant for more information.